



1 Seymour Terrace

London, SE20 8SA

Asking Price £775,000

Welcome to Seymour Terrace, Anerley, London, SE20 - a stunning property overlooking the beautiful Betts Park. This charming property boasts a perfect blend of modern amenities and period features, making it a truly unique find in the heart of London.

As you step inside, you are greeted by a spacious reception room that offers a warm and inviting atmosphere for entertaining guests or relaxing with your family. With four bedrooms and three bathrooms, there is ample space for everyone to enjoy their own privacy and comfort.

One of the highlights of this property is the modern en-suite bathroom, complete with his and hers sinks, adding a touch of luxury to your daily routine. The large kitchen is a chef's dream, featuring modern appliances, high ceilings, and large windows that flood the space with natural light, creating a bright and airy ambience.

Step outside onto the balcony and take in the picturesque views, or explore the expansive garden that offers plenty of space for outdoor activities and al fresco dining. Whether you are looking to host a summer barbecue or simply unwind in your own private oasis, this property has it all.

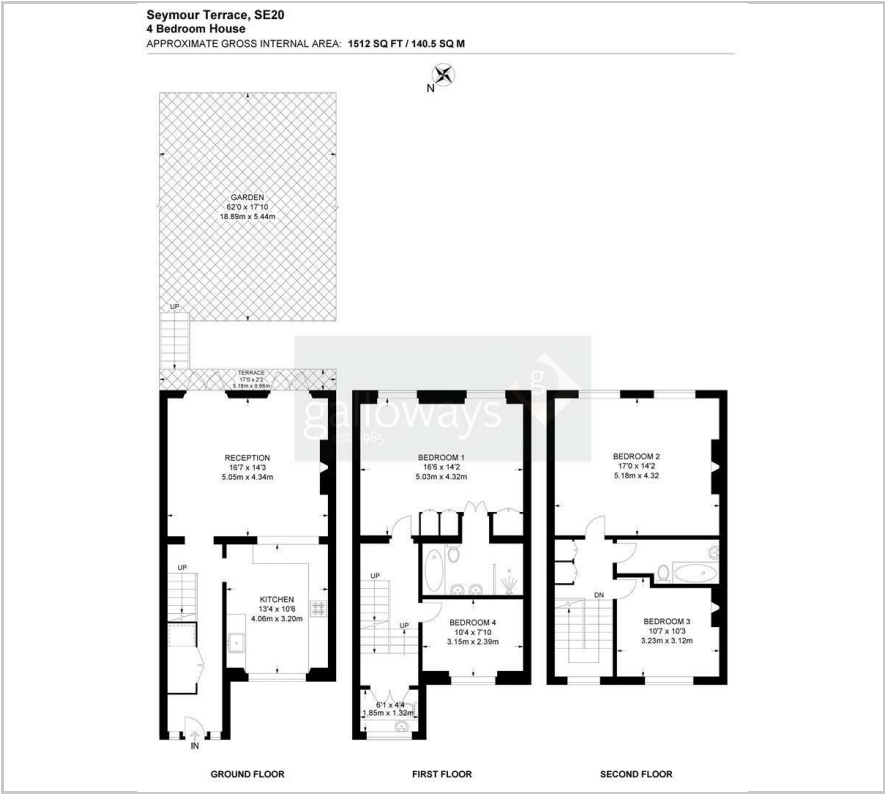
Vendor comments: "We love this house - it is extremely light, airy and peaceful thanks to enormous windows and high ceilings, and provides amazing views. Having Betts Park on our doorstep and being close to Crystal Palace Park has been amazing for our two young daughters, and we love pottering around the Triangle too. The large south-facing

- FOUR BEDROOM
- FREEHOLD
- THREE STORY
- MODERN KITCHEN
- GARDEN & BALCONY
- MODERN EN-SUITE BATHROOM
- OWN FRONT DOOR
- 1 MINUTE WALK TO BETTS PARK
- 7 MINUTE WALK TO ANERLEY STATION
- (ALL WALKING TIMES ARE ESTIMATED BY GOOGLE MAPS)

Viewing

Please contact our Galloways Penge Office on 020 8778 1120 if you wish to arrange a viewing appointment for this property or require further information.

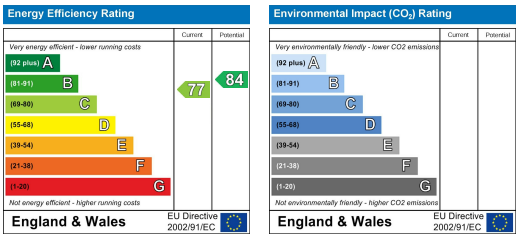
Floor Plan



Area Map



Energy Efficiency Graph



These particulars, whilst believed to be accurate are set out as a general outline only for guidance and do not constitute any part of an offer or contract. Intending purchasers should not rely on them as statements of representation of fact, but must satisfy themselves by inspection or otherwise as to their accuracy. No person in this firms employment has the authority to make or give any representation or warranty in respect of the property.